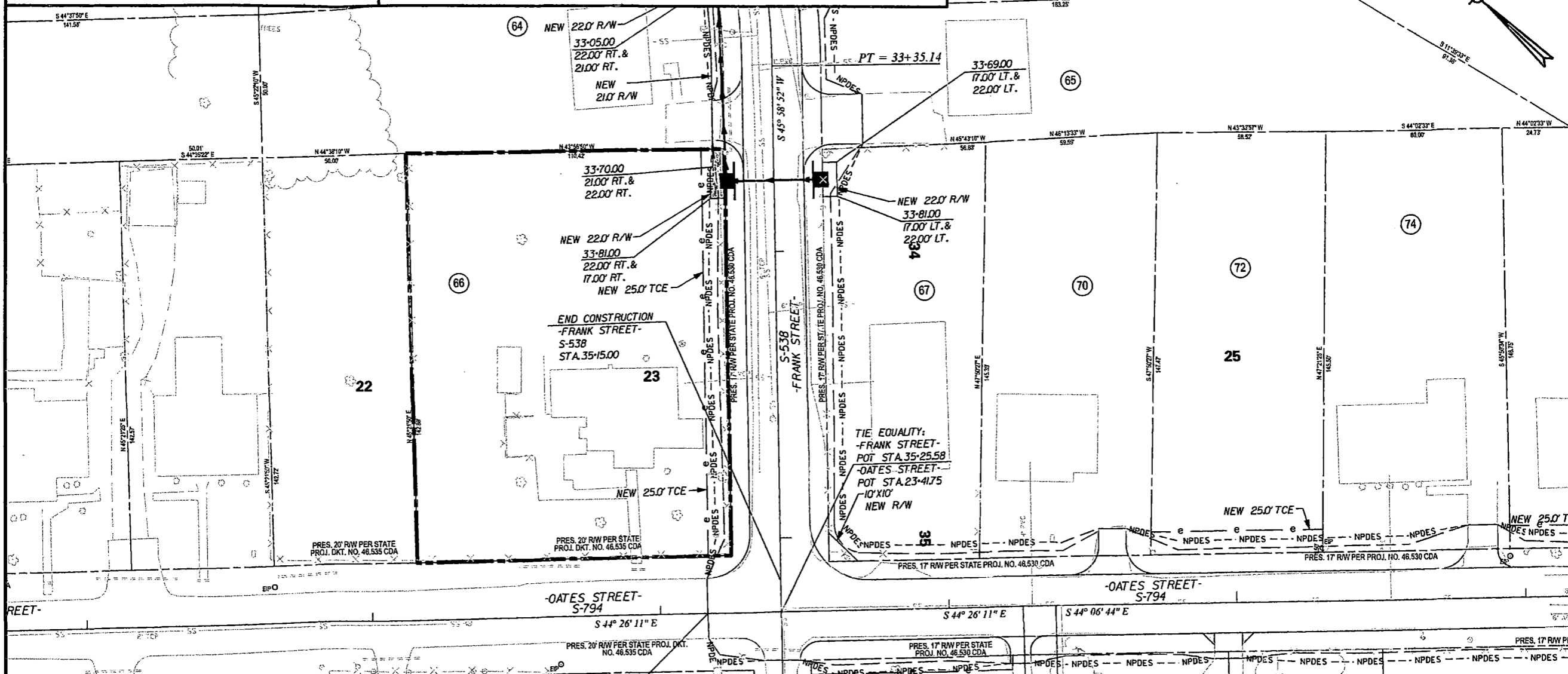


EXHIBIT "A"

THIS EXHIBIT IS A GRAPHIC REPRESENTATION OF THE "AREA OF ACQUISITION" AND IS IN DIRECT REFERENCE TO ENGINEERING PLANS, A COPY OF WHICH CAN BE OBTAINED FROM SCDOT HEADQUARTERS; 955 PARK STREET, COLUMBIA, SC 29201. ADDITIONALLY, UPON COMPLETION OF CONSTRUCTION, A RECORDABLE RIGHT OF WAY PLAT SHALL BE SUBMITTED TO THE REGISTER OF DEEDS IN COMPLIANCE WITH SCDOT STANDARD DRAWING 809-105-00.



<p>TRACT 66 OBTAIN</p>	<p>YORK COUNTY PENNIES FOR PROGRESS AREA OF ACQUISITION FROM TRACT 66 Proj ID P039233</p>	<p>NIVIS NIVIS ENGINEERS & CONSULTANTS, INC. 7100 E. HOPKINS DRIVE, SUITE 100 CHARLOTTE, NC 28227 P: 704.537.2500 www.nivis.com</p>	
<p>80 SF (0.002 AC) RB BK 21544 PG 163</p>	<p>PREPARED 06/12/2024</p>	<p>SCALE 40' 20' 0' 40' 80'</p>	<p>COUNTY YORK</p>